

ELEVATOR MONITORING SYSTEM



U-Shape Level
Sensor



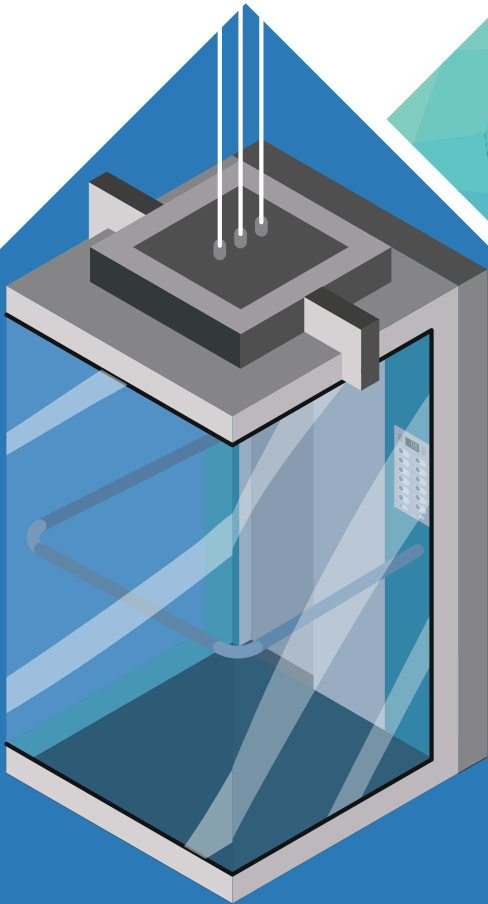
Door Sensor



Limit Sensor



Occupancy Sensor

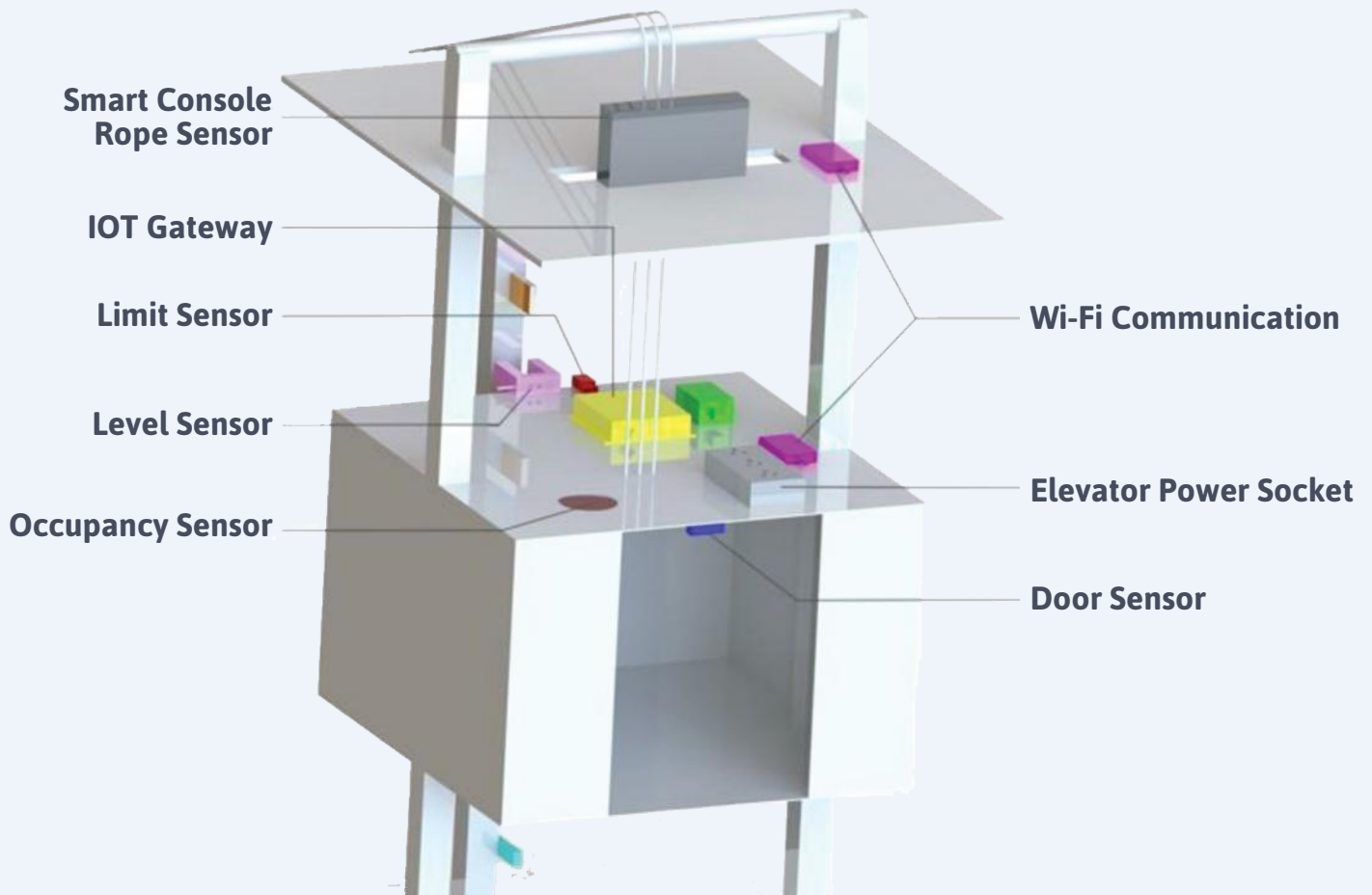


Elevator Monitoring System

Remote Elevator Monitoring System

Remote Elevator Monitoring System is used for the online centralized monitoring of the operation status for both large groups of elevators widely distributed and managed in the city, and small groups of elevators in privately contained IoT ecosystem. The system has been designed by using different sensors for any individual elevator to monitor:

- **Level Up/down**
- **Door Open/close**
- **Passenger Presence**
- **Traction Rope**
- **Limits Together**

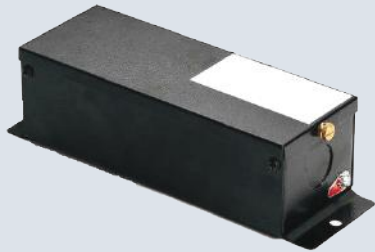


Elevator Monitoring System



Level Sensor

Sensing the movement and moving direction of the elevator cabin
Installed on top of the cabin
Sensing the leveling status of cabin



Door Sensor

Installed behind the cabin door
Sensing the open/close movement and status of the cabin door



IIoT Gateway

Process and integrate data from all sensors
Monitor traction rope damage
Monitor elevator power
Edge-computing sensor for multi-mode function

Challenges:

- Different locations (Around the City)
- Different Elevator Vendors
- High Temperature Environment
- Central Monitoring and Management system
- Cost of Operation
- Reliable Real Time System
- Expandable Solution
- Easy to installation and maintenance

Elevator Monitoring System

WoMtechnology , Provides a complete range of hardware and software for Remote Elevator Monitoring System based on Industrial IoT. The products range can fulfill all the requirements in below sectors:

- U-Shape Level Sensor
- Door Sensor
- Occupancy Sensor
- Limit Sensor
- Data Logger and Commuication

Remote Elevator Monitoring System is used for the online centralized monitoring of the operation status for both large groups of elevators widely disturbed and managed in the city, and small groups of elevators in privately contained IoT ecosystem. The system has been designed by using different sensors for any invidual elevator to monitor:

- Level Up/down
- Door Open/close
- Passenger Presence
- Traction Rope
- Limits Together

The mentioned parameter can be monitored via Cloud Platform System to monitoring and manage the

- Trapping
- Mis-Level
- Door Fault
- Power Down
- Over Limit
- Rope Damage

DASHBOARD

